



**FLUKE®**

# **Fluke Food and Beverages Product Catalogue**





## Fluke ii900 Industrial Acoustic Imager

### Application:

Food & Beverages companies consume intensive compressed air to drive their overall production for filling, dry cleaning, mixing or sorting etc. Pressure uses can range from 15psi to as high as 750psi. Leaks are costly and there are challenges to locate it with traditional approach.

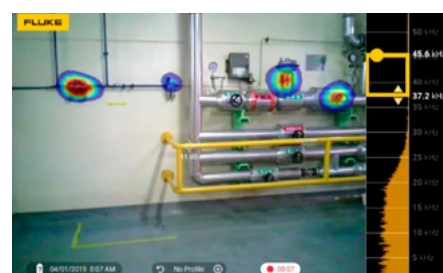
### Benefits:

Fluke advanced industrial acoustic imager allows user to see where those leaks are, verify and get them fix instantly. With the leaks fixed, the wastes are recovered. Less strains are placed on the air compressor systems and an improved quality production can take place.

The advanced LeakQ function gives user instant access to the severity scale and distance right on the site. Quantification of the leak rate and costs of the wasted energy is simply carried out with the LeakQ reporting tool.



Portable acoustic imager detects leaks



Easily save images and video to review the leak locations



Default LeakQ Summary					
#	Mode	File Name	LeakQ	Location	Est. Leak Rate
14	✗	Default_2014.as2	6.3	21.9 l/min	222 EUR/year
16	✗	Default_2016.as2	4.0	2.1 l/min	21 EUR/year
22	✗	Default_2022.as2	4.7	4.6 l/min	47 EUR/year
25	✗	Default_2025.as2	4.6	4 l/min	40 EUR/year
30	✗	Default_2030.as2	7.7	50.9 l/min	515 EUR/year
33	✗	Default_2033.as2	8.3	67.2 l/min	680 EUR/year
			Total:	190.7 l/min	1529 EUR/year

Compute the cost of the leaks

Models	ii900
Specifications	
Number of microphones	64 digital MEMS
Frequency band	2 kHz to 52 kHz
Operation distance range	0.5 to > 50 meters
Field of view	63° +/- 5°
Minimum frame rate	12.5 FPS
Resolution	1280 x 800 (1,024,000 pixels)
Touchscreen	Capacitive
Acoustic image	SoundMap™ image
Image format	.jpg or .png
Video format	.mp4
Rechargeable batteries	02 with each lasting 6 hours
Standard palettes	3: Grayscale, Ironbow, Blue-Red
Warranty	2 years





## Fluke 810 Vibration Tester

### Application:

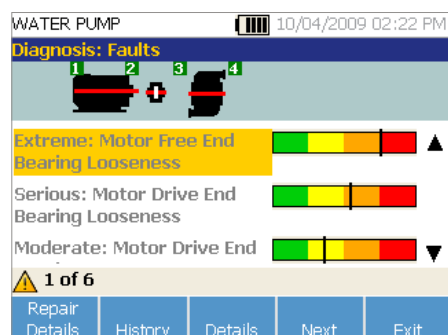
Bearing issues are common due to several reasons. One reason would be over-driving machine load to meet the high-capacity demand. Getting answers to these mechanical issues is the first step to identifying and resolving the root cause of the problems.

### Benefits:

A vibration screening tool, Fluke 805, can give you early signs of warnings based on the overall vibration result. The Fluke 805 displays the status of the condition for the overall vibration and bearing. The measured values can be used for trending.

The Fluke 810 smart algorithm provides you powerful diagnosis to identify the mechanical problems present.

Easily conduct automated vibration analysis of mechanical equipment and pinpoint the location, cause, and severity of the problem.



Fluke 810 diagnoses bearing, misalignment, looseness, and unbalance problem



Overall vibration levels for screening and trending using the Fluke-805



## Fluke Ti480 Pro Thermal Imager

### Application:

Maintenance team has a heavy responsibilities of ensuring that electrical, mechanical and process systems are in a healthy state. It is important to survey all the facilities assets such as motor, steam traps, boiler, electrical panels etc as a condition-based maintenance to avoid costly unplanned downtime.

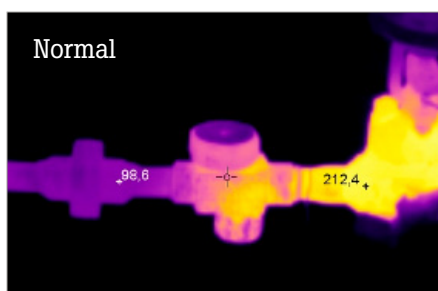
### Benefits:

The Fluke Ti480 Pro thermal imaging solution can be easily used as a first line of defense for routine maintenance. It displays 640 x 480 high resolution visual images of surface temperatures to easily and safely identify electrical and mechanical problems by observing abnormal thermal patterns from the normal baseline.

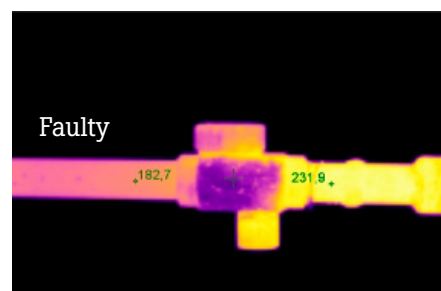
Models	Ti480 Pro	Ti401 Pro
<b>Specifications</b>		
Infrared resolution	640 x 480 (1280 x 960 with SuperResolution)	640 x 480
Field of view (FOV)	34° H x 24° V	34° H x 24° V
IFOV	0.93 mRad	0.93 mRad
Focus	MultiSharp Focus, LaserSharp Auto Focus, Advanced manual focus	LaserSharp Auto Focus, Advanced manual focus
Optional lenses	•	•
IR-Fusion Technology	•	•
3.5 inch touch screen display	•	•
Thermal sensitivity	≤ 0.05 °C at 30 °C target temp (50 mK)	≤ 0.075 °C at 30 °C target temp (75 mK)
Temperature measurement range	-20 °C to 1000 °C	-20 °C to 650 °C
Software	•	•
Documentation features	IR-PhotoNotes™, voice annotation, and text annotation	
Video recording	•	-
Alarms	•	•



Electromechanical maintenance



Normal



Faulty

Stream trap issues





## Fluke 1625-2 Earth Ground Tester

### Application:

Poorly grounded equipment can result in safety problems or cause damage to equipment. Sensitive electronic components can affect control systems due to electrical noises suffered from poor ground resistances.

### Benefits:

The Fluke 1625-2 Earth Ground Tester provides 4 methods of ground resistance test. The various methods help overcome the different infrastructure constraints in conducting grounding measurements. Two stakeless method allows users to carry out both measurements within the facility or outside the building without having to disconnect the ground electrode cable.

The 1625-2 has advanced automatic frequency control (AFC) to minimize interference. Before measuring, the instrument identifies existing interference and selects a measurement frequency to minimize its effect.



Building grounding test



Stakeless test method in the facility

Models	1625-2
<b>Specifications</b>	
3 / 4-pole / soil	•
Selective 1 clamp	•
Stakeless 2 clamps	•
2-pole	•
Automatic Frequency Control (AFC) 94 Hz to 128 Hz	•
R* measurement (55 Hz)	•
Adjustable limits	•
Memory	•
AC leakage current	•





## Fluke BT521 Advanced Battery Analyzer

### Application:

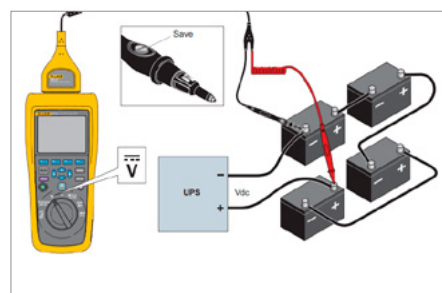
Backup battery system provides power assurance in the event of a sudden power cut-off. Electrical team must ensure that the battery health are in good condition in order to carry out its mission during power failure. Loose connections, dry-out and overheating are some of the potential battery failures.

### Benefits:

Conduct proper battery maintenance with the Fluke BT521 without stopping production. Run a 3-second battery measurements to determine individual stationary batteries health condition to evaluate voltage DC, internal resistances and temperature.



Battery testing while in operation



Testing through the string of batteries

Models	BT521
<b>Specifications</b>	
Battery resistance range (3 to 3000 mΩ)	•
V dc ( 6V to 1000V)	•
V ac (45 Hz to 500 Hz with 800 Hz filter)	•
Frequency (displayed with V ac and A ac)	•
AC voltage ripple (20 KHz max)	•
Temperature	•
Interactive Test Probe set, with	•
Extender	•
Temperature	•
Meter mode	•
Sequence mode	•



## Fluke 190 Series-III/ MDA-550-III Portable Oscilloscopes

### Application:

F&B facility maintenance team are required to maintain various types of electrical equipment that carries AC or DC signals. Being able to obtain a complete picture of the electrical signal helps in troubleshooting, installation and maintenance tasks. Some examples are finding intermittent faults, proper HVAC installation, or motor drive troubleshooting.

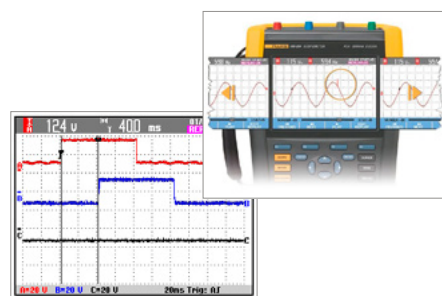
### Benefits:

The Fluke 190 Series-III covers wide frequency bandwidth to support various types of applications. The Connect-and-View displays unknown waveform on the screen to speed up diagnosis process. The real-time waveform speeds up PLC installation, configuration and troubleshooting by precisely visualizing the voltage and timing deviation.

Complex motor-drive issues on the conveyor systems can be resolved with Fluke MDA-550-III Motor Drive Analyzer.



Electrical portable oscilloscope



Real-time waveform capture for timing synchronization



MDA-550-III automates drive measurements that provide reliable, repeatable test results.

Models	190 Series-III	MDA-550-III
<b>Specifications</b>		
Models Up to 500MHz	•	•
Up to 4 isolated input channels	•	•
Connect-and-View™	•	•
Advanced triggering	•	•
Cursors	•	•
Power measurements	•	•
Waveform mathematics	•	•
Oscilloscope function	•	•
<b>Advanced features</b>		
TrendPlot™	•	•
ScopeRecord™	•	•
100 screen replay	•	•
FFT	•	•
150kHz Harmonics		•
Guided motor-drive analysis		•
Motor drive output PWM		•
(V, I, dV/dt, overshoot)		•
Motor shaft voltage discharges		•
CAT III 1000V/ CAT IV 600V	•	•





## Fluke 438-II Power Quality and Motor Analyzer

### Application:

Electrical noises due to poor power quality or contributions from additional non-linear load can cause stoppage to production. Power quality issues can cause additional electrical wastes. In addition, unknowingly over working the systems can shorten assets' lifespan.

### Benefits:

The Fluke 438-II allows user to verify if the power delivered at the entrance is clean to avoid power quality (PQ) disturbances from tripping the loads installed downstream. Add on the energy loss computation that provides the diagnostic view of the types of power wastes.

Motor mechanical load analysis are evaluated without the need for external torque or speed sensors. During operation, the load performance can be easily understood with the NEMA Derating chart.

Find out how easy it is to capture PQ events, quantify electrical energy losses and mechanical performances.

ENERGY LOSS CALCULATOR				
	DEMO	0:02:13		
	Total	Loss	Cost	
Effective kW	187	kW 15.6	Eur 2.33 /hr	
Reactive kvar	25	kW 0.3	Eur 0.04 /hr	
Unbalance kVA	22	kW 0.4	Eur 0.07 /hr	
Distortion kVA	35	kW 1.6	Eur 0.24 /hr	
Neutral A	38.0	kW 0.1	Eur 0.01 /hr	
Total		kEur 23.64/y		
10/28/12	13:41:08	230V 50Hz 3Ø WYE	EN50160	
LENGTH 200 m	DIAMETER 50 mm2	METER	RATE 0.15 /kWh	HOLD RUN

Energy loss computation

MOTOR ANALYZER				
	P <sub>mech</sub>	0:01:26		
Mechanical		% of rated		
hp mech.	2.013	90%		
lb.ft. torque	4.09	89%		
rpm speed	3471	99%		
% efficiency	82			
02/12/16	15:07:35	208V 60Hz 3Ø DELTA	EN50160	
ANALYZER LIMITS	METER	NEMA DERATING	MOTOR SETUP	STOP START

MOTOR ANALYZER				
	P <sub>elec</sub>	0:01:55		
Electrical		% of rated		
kV electr.	2.083	93%		
PF full	0.86	95%		
% Unbal. <sub>NEMA</sub>	2	95%		
Harm. <sub>NEMA</sub>	0.04	97%		
02/12/16	15:10:08	208V 60Hz 3Ø DELTA	EN50160	
ANALYZER LIMITS	METER	NEMA DERATING	MOTOR SETUP	STOP START

Motor Mechanical and electrical load performances

Models	438-II
Specifications	
Measure V, I, kW, Cos/DPF, kWhr	•
Measure MIN/MAX and AVG values	•
10-day logging	•
Waste energy monetization	•
THD measurement (V & I)	•
Harmonics 1 to 25 for V & I	•
Power harmonics	•
Oscilloscope function	•
Voltage dips and swells	•
Comprehensive logging capability	•
Advanced features	
Inrush, Flicker, Transients, Mains signalling	•
Power wave	•
Event waveform capture	•
Power inverter efficiency	•
Motor analysis (Speed, torque, mechanical power, efficiency)	•





## Fluke 729 and 729 Pro Automatic Pressure Calibrator

### Application:

Pressure instrumentations can face accuracy errors or drift issues. E&I team typically face pressure leaks challenges when calibrating these pressure sensors, leading to unstable results. It is also a time-consuming process to test multiple points in order to achieve repeatable switch testing results.

### Benefits:

Verify multiple types of pressure devices and switches to ensure accuracy and performance. The Fluke-729 comes with automated pressure generation capabilities to source to your defined pressure amount while the controller helps fine-adjust and stabilize to the setpoint.

It provides QA/QC or E&I team to gain significant time savings while delivering quality results.



Portable automatic pressure calibration

04/02/2020 04:26 pm 0.006 psi 24V

#### Tasks

1. Pressure Transmitter (P/I)
2. Pressure Switch (SW)
3. Current to Pressure Test (I/P)
4. Pressure Leak Test
5. Pressure Transmitter (P/V)
6. Pneumatic Pressure Transmitter (P/P)

Downloaded Tasks Custom Tasks Resume Tasks

#### Built-in calibration test templates

01/15/2017 06:30 am -0.001 psi HART 24V			
P/I Calibration > Result > As Left			
Test Point	Source	Measure	Error
	psi	mA	%
0.000	0.000	3.999	-0.01
50.000	50.002	12.006	0.03
100.000	99.999	20.011	0.07
50.000	49.998	12.004	0.03
0.000	-0.014	3.996	-0.01
Abort	Page Up	Page Down	Done

#### Saved test results

Models	729	729 Pro
<b>Specifications</b>		
mA measure (range and accuracy)	0-24 mA @ 0.01 %	0-24 mA @ 0.01 %
mA source/simulate	0-24 mA @ 0.01%	0-24 mA @ 0.01%
DCV measure	0-30 V @ 0.01 %	0-30 V @ 0.01 %
Model pressure ranges	0 to 30 psi 0 to 150 psi 0 to 300 psi	6 types of internal pressure modules up to 1,000 psi
750P Pressure Module compatibility	50 models	50 models
Temperature measure	PT100 measure only	PT100 measure only
<b>Advanced features</b>		
24 V loop power	•	•
Source auto step/ramp	•	•
Integral pressure source	•	•
Automatic pressure generation and leak compensation	•	•
Switch test	•	•
Documenting	•	•
HART communication	•	•
Software	DPCTrack2 (Option)	DPCTrack2 (Option)





## Fluke 754 Documenting Process Calibrator

### Application:

Process control system plays a critical function in ensuring safe monitoring and processing of the materials used in F&B. This can only be achieved with effective process verification and calibration solution to ensure accuracy. An optimized process system brings about less operational wastes.

### Benefits:

Designed specifically for the process industry, Fluke 754 comes with broad workload coverage, calibration power and unsurpassed accuracy. The all-in-one Fluke 754 provides quality test workflow using documenting features with added HART function for adjustments. Achieve up to 50% time saving from making multiple trips just to complete the process calibration tasks.



Fluke 754 Documenting Process Calibrators:  
Work smarter. Work faster.



Fluke 726 Precision Multifunction  
calibrator (non-documenting)

Models	726	754
<b>Specifications</b>		
mA measure (range and accuracy)	0-24 mA @ 0.01%	0-100mA @ 0.01%
mA source/simulate	0-24 mA @ 0.01%	0-22 mA @ 0.01 %
DCV measure	0-30 V @ 0.01 %	0-300 V @ 0.02 %
DCV source	0-20 V @ 0.01 %	0-15 V @ 0.01 %
ACV measure		0-300 V @ 0.5 %
Ohms measure	0-3.2 KΩ	0-10 KΩ
Ohms source	0-3.2 KΩ	0-10 KΩ
Frequency measure	1-10 kHz	1-50 kHz
Frequency source	1-10 kHz	1-50 kHz
750P Pressure Module compatibility	50 models	50 models
Temperature measure/source	13 TC types, 8 RTD types	13 TC types, 8 RTD types
<b>Features</b>		
24 V loop power	•	•
Source auto step/ramp	•	•
Switch test	•	•
Documenting		•
HART communication		•
Software		DPCTrack2 (Option)



## Contact us:

### Singapore

Fluke South East Asia Pte Ltd

[www.fluke.com/en-sg](http://www.fluke.com/en-sg)

Address: 1 Clementi Loop, #06-02/03/04, Singapore 129808

For sales / product enquiry: +65-6799-5566 / [fsea.info@fluke.com](mailto:fsea.info@fluke.com)

For servicing and calibration: +65-6799-5588 / [service.asean@fluke.com](mailto:service.asean@fluke.com)

### Malaysia

Fluke Electronics (M) Sdn Bhd

[www.fluke.com/en-my](http://www.fluke.com/en-my)

Address: Suite D-3A-4, Level 3A, Block D, South Gate Commercial Centre, No. 2, Jalan Dua Off Jln Chan Sow Lin, 55200 Kuala Lumpur

For sales / product enquiry: +60-3-9223-1216 / [fsea.info@fluke.com](mailto:fsea.info@fluke.com)

### Indonesia

BUT. Fluke South East Asia Pte Ltd

[www.fluke.com/id-id](http://www.fluke.com/id-id)

Address: South Quarter Building Tower C, Level 10, #10-10B, Jl. R.A. Kartini Kav. 8, Jakarta Selatan, Indonesia

For sales / product enquiry: +62 21 5098 2621 / [fsea.info@fluke.com](mailto:fsea.info@fluke.com)

### Vietnam

Representative office of Fluke South East Asia Pte Ltd

[www.fluke.com/vi-vn](http://www.fluke.com/vi-vn)

Address: 3rd Floor, VOV Building, 07 Nguyen Thi Minh Khai Street, Ben Nghe Ward, District 1, Ho Chi Minh City, Vietnam

For sales / product enquiry: +84-28-2220-5371 / [fsea.info@fluke.com](mailto:fsea.info@fluke.com)

### Philippines

[www.fluke.com/en-ph](http://www.fluke.com/en-ph)

### Thailand

[www.fluke.com/en-th](http://www.fluke.com/en-th)

**Interested to schedule a free product demonstration or a consultation with a local Fluke Specialist?**



**Click on the QR code above to submit your interest!**

### Join our online community:



[www.facebook.com/flukesoutheastasia](http://www.facebook.com/flukesoutheastasia)

[www.facebook.com/flukeindo](http://www.facebook.com/flukeindo)

[www.facebook.com/flukeviet](http://www.facebook.com/flukeviet)



[www.youtube.com/flukesoutheastasia](http://www.youtube.com/flukesoutheastasia)

[www.youtube.com/flukevietnam](http://www.youtube.com/flukevietnam)



[www.linkedin.com/company/fluke-southeastasia](http://www.linkedin.com/company/fluke-southeastasia)



[www.instagram.com/fluke.sea](http://www.instagram.com/fluke.sea)

**Fluke.** *Keeping your world up and running.®*

©2021 Fluke Corporation. Specifications subject to change without notice.

Modification of this document is not permitted without written permission from Fluke Corporation.